



Photo: (C) Curt Carnemark / World Bank

# PMA2020/GHANA

SEPTEMBER-NOVEMBER 2017 (ROUND 6)

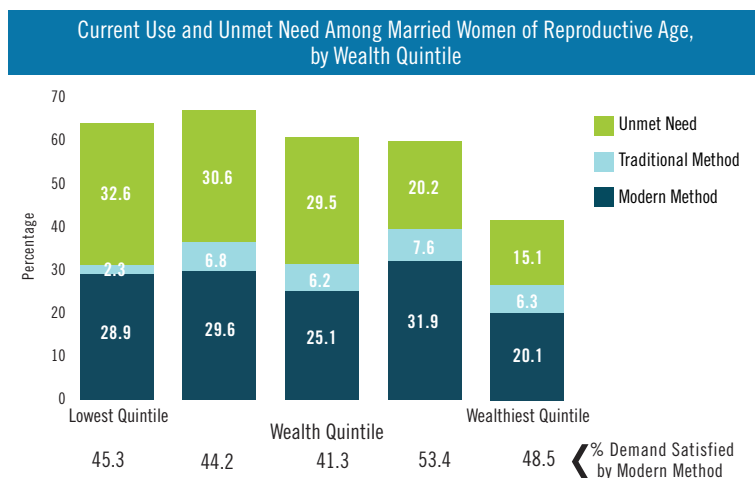
**Performance Monitoring and Accountability 2020 (PMA2020)** uses innovative mobile technology to support low-cost, rapid-turnaround surveys to monitor key indicators for family planning. The project is implemented by local universities and research organizations in 11 countries, deploying a cadre of female resident enumerators trained in mobile-assisted data collection. PMA2020/Ghana is led by the Kwame Nkrumah University of Science and Technology (KNUST), School of Medical Sciences in collaboration with University of Development Studies (UDS) and with the support of the Ghana Health Service and Ghana Statistical Service. Overall direction and support is provided by the Bill & Melinda Gates Institute for Population and Reproductive Health at the Johns Hopkins Bloomberg School of Public Health through a grant from the Bill & Melinda Gates Foundation.

For more information, please visit <http://www.pma2020.org>

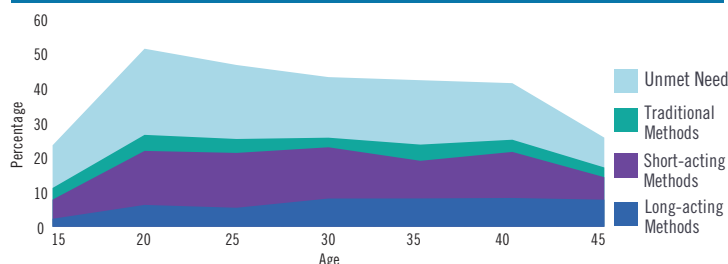
## KEY FAMILY PLANNING INDICATORS

| Select Family Planning Indicators Across Recent Surveys<br>All Women (n=4,154) and Married Women (n=2,451), Age 15-49 |                          |             |                          |             |                          |             |
|---|--------------------------|-------------|--------------------------|-------------|--------------------------|-------------|
|   | Round 4<br>May-June 2015 |             | Round 5<br>Aug-Sept 2016 |             | Round 6<br>Sept-Nov 2017 |             |
|   | All                      | Married     | All                      | Married     | All                      | Married     |
| <b>Contraceptive Prevalence Rate (CPR)</b>  |                          |             |                          |             |                          |             |
| All Methods CPR   | 28.3                     | 34.9        | 26.0                     | 31.2        | <b>25.7</b>              | <b>33.0</b> |
| Modern Methods Use (mCPR)   | 23.6                     | 29.2        | 21.6                     | 25.8        | <b>21.3</b>              | <b>27.4</b> |
| Long Acting/Permanent CPR   | 5.3                      | 7.0         | 5.9                      | 7.2         | <b>7.3</b>               | <b>10.5</b> |
| <b>Total Unmet Need</b>   | <b>21.7</b>              | <b>29.6</b> | <b>23.1</b>              | <b>31.7</b> | <b>20.7</b>              | <b>26.3</b> |
| For Limiting  | 6.5                      | 10.3        | 7.9                      | 12.1        | <b>7.3</b>               | <b>10.4</b> |
| For Spacing   | 15.2                     | 19.4        | 15.1                     | 19.6        | <b>13.4</b>              | <b>15.9</b> |
| <b>Total Demand</b>   | <b>45.3</b>              | <b>58.9</b> | <b>49.0</b>              | <b>62.9</b> | <b>46.4</b>              | <b>59.3</b> |
| Demand Satisfied by Modern Method (%)   | 52.1                     | 49.7        | 44.1                     | 41.0        | <b>46.0</b>              | <b>46.1</b> |

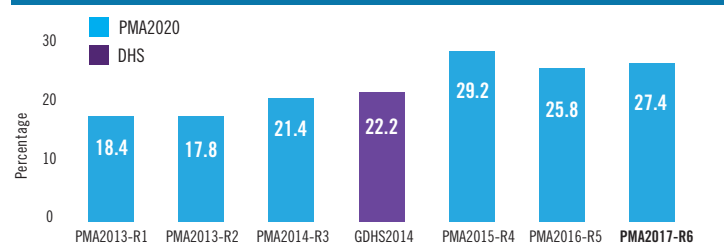
| Fertility Indicators (All Women) |                          |                          |                          |
|----------------------------------|--------------------------|--------------------------|--------------------------|
|                                  | Round 4<br>May-June 2015 | Round 5<br>Aug-Sept 2016 | Round 6<br>Sept-Nov 2017 |
| <b>Last Birth Unintended (%)</b> | 42.4                     | 41.3                     | <b>43.1</b>              |
| Wanted Later                     | 31.0                     | 27.3                     | <b>25.6</b>              |
| Wanted No More                   | 11.4                     | 13.9                     | <b>17.6</b>              |



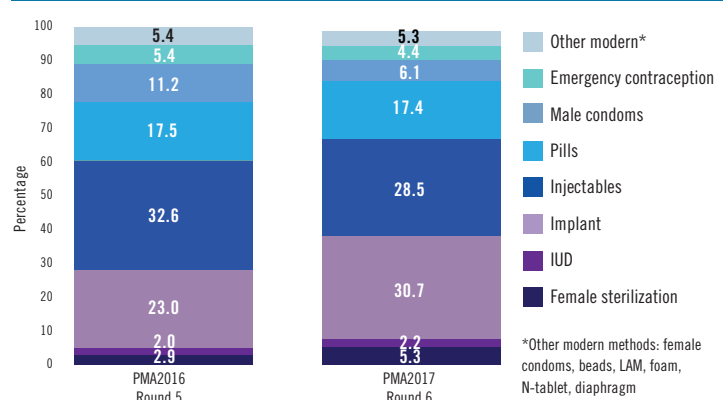
### Unmet Need and Contraceptive Use, by Age (All Women)



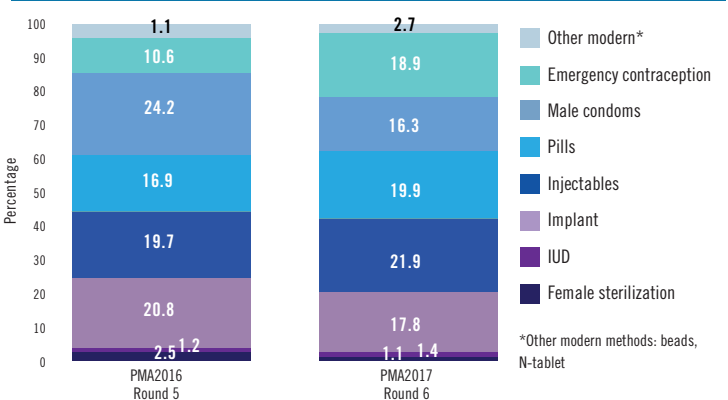
### Modern Contraceptive Prevalence Rate (Married Women Age 15-49)



### Current Modern Method Mix Among Married Contraceptive Users (n=698)



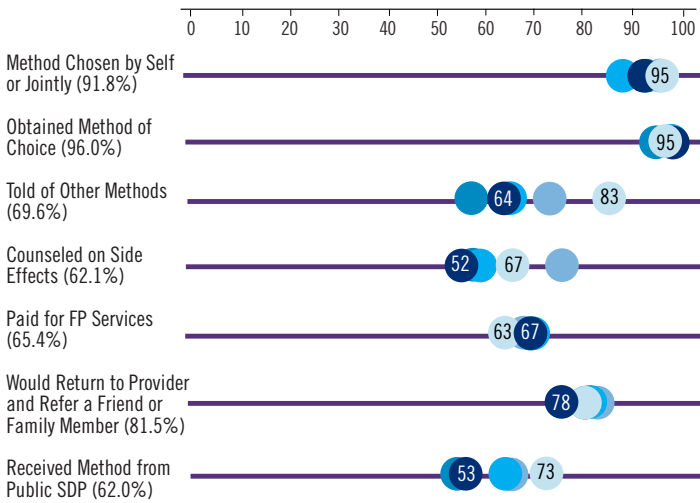
### Current Modern Method Mix Among Unmarried Sexually Active Contraceptive Users (n=153)



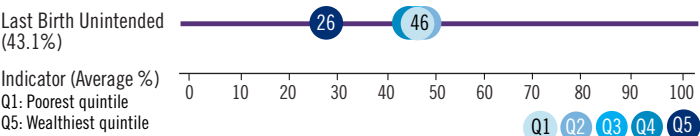
# PMA2020/GHANA

## INDICATORS FOR ACCESS, EQUITY, QUALITY AND CHOICE

For Current Modern Users (%) (n=921), Indicators by Wealth Quintile

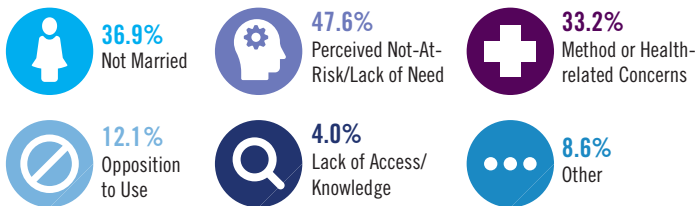


Births in the Past Five Years, or Current Pregnancies (n = 1,755)



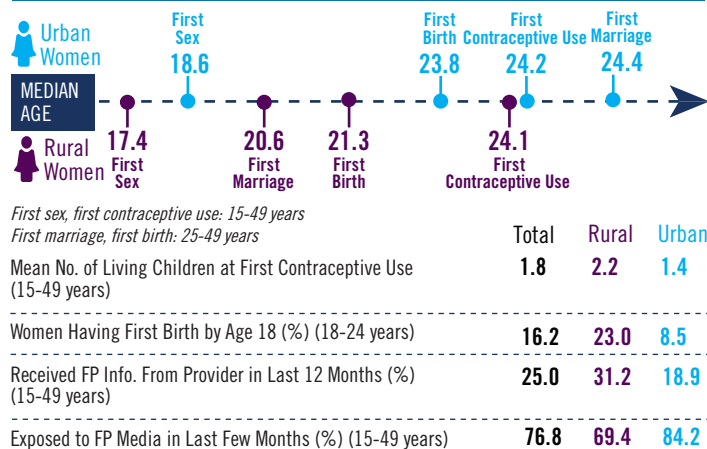
For Current Female Non-Users (n=1,988)

Reasons Mentioned for Non-Use Among All Women Wanting to Delay the Next Birth Two or More Years (%)



\*Respondents were able to pick more than one answer

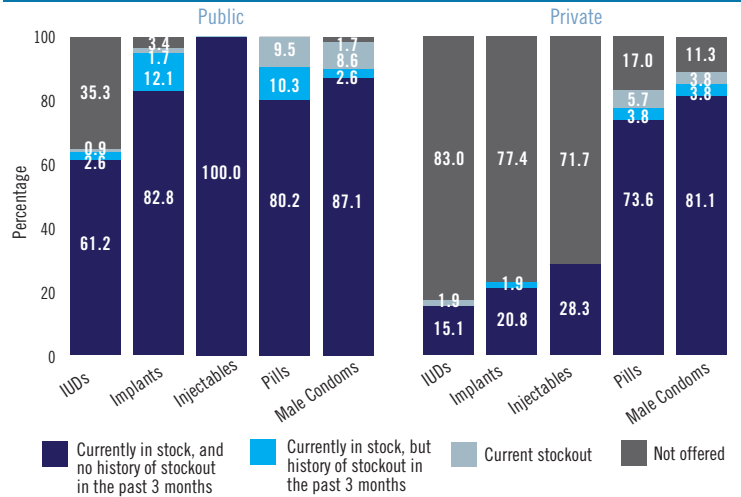
Reproductive Health and Contraceptive Indicators



### SAMPLE DESIGN

PMA2017/Ghana-R6, the sixth round of data collection in Ghana, used a two-stage cluster design with urban-rural, major ecological zones as the strata. A sample of 100 enumeration areas (EA) was drawn by the Ghana Statistical Service from its master sampling frame. In each EA, households and private health facilities were listed and mapped, with 42 households randomly selected. Households were surveyed and occupants enumerated. All eligible females age 15 to 49 were contacted and consented for interviews. The final sample included 4,100 households (98.0% response rate), 4,154 females (98.1% response rate) and 179 SDPs (91.3% response rate). Data collection was conducted between September and November 2017.

Percent of Facilities Offering Family Planning with Methods in Stock on Day of Interview (n=169, 116 Public, 53 Private)



Percent of All Public Facilities With At Least 3 or 5 Modern Contraceptive Methods, by Facility Type

| Facility Type                                       | 3 or more methods | 5 or more methods |
|---|-------------------|-------------------|
| Hospital (n=56)                                     | 100.0             | 100.0             |
| Health Center (n=34)                                | 100.0             | 47.1              |
| Community-Based Health Planning and Services (n=24) | 95.8              | 37.5              |
| Total   | 99.1              | 71.6              |

\*\*Data from facility types with sample size less than 10 were calculated, but are not presented in this brief.

Service Delivery Points (n=179; 116 Public, 63 Private)

|  | Public | Private | Total |
|--|--------|---------|-------|
| Among All Service Delivery Points:   |        |         |       |
| Offering Family Planning (%)   | 100.0  | 84.1    | 94.4  |
| With Mobile Teams Visiting Facility In Last 12 Months (%)                          | 48.3   | 4.8     | 33.0  |
| Supporting CHWs From This Service Delivery Point (%)                               | 32.8   | 3.2     | 22.3  |
| Among Service Delivery Points Offering FP Services:                                |        |         |       |
| Average Number Of Days Per Week FP Is Offered                                      | 5.7    | 6.5     | 5.9   |
| Offering Female Sterilization (%)  | 41.4   | 11.3    | 32.0  |
| Offering FP Counseling/Services To Adolescents (%)                                 | 98.3   | 77.4    | 91.7  |
| Charging General User Fees For FP Services (***)                                   | 0.0    | 5.7     | 1.8   |
| Availability of Instruments or Supplies for Implant Insertion/Removal <sup>+</sup> | 91.1   | 91.7    | 91.1  |
| Availability of Instruments or Supplies for IUDs <sup>++</sup>                     | 88.0   | 88.9    | 88.1  |

\*\*\*Question wording was changed from Round 4.

<sup>+</sup>Among SDPs that provide implants; includes: Clean Gloves, Antiseptic, Sterile Gauze Pad or Cotton Wool, Local Anesthetic, Sealed Implant Pack, Surgical Blade

<sup>++</sup>Among SDPs that provide IUDs; includes: Sponge-holding forceps, Speculums (large and medium), and Tenaculum

